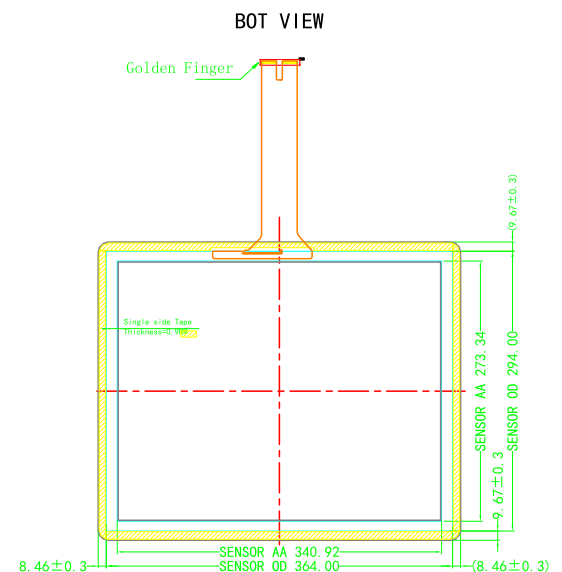
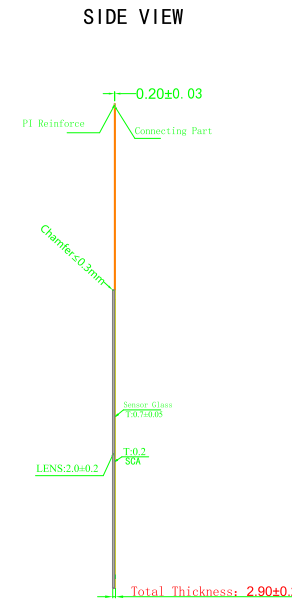
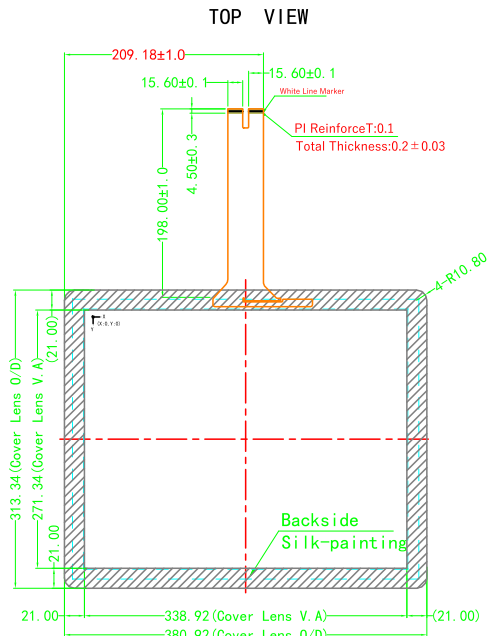
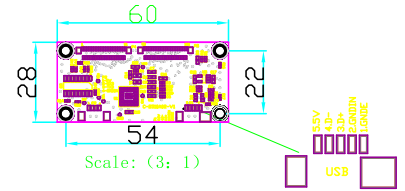


1	2	3	4	5	6
ver.	modify NO.	Details	Area	P. I. C	Date



Technical Datasheet :

- Cover Glass: Tempered Glass
- Structure: Glass+Glass
- Controller IC: ILI2510
- Surface Hardness: ≥6H
- Light Transmittance: ≥85%
- Unmarked Tolernace: ±0.3mm
- All material used conform to RoHS Standards



PIN	Define
1	GNDE
2	GNDI/N
3	D+
4	D-
5	VDD/5V

Designed by:	D032
Checked by:	T006
Approved by:	P012
Workmanship:	W002
Standardization:	S015
Released by:	M012

Part No.	SNT-ITO-TPB-17-ILI		
Product Name : 17inch Touch Panel	Drawing No.	S200815170	
	Project Code.	i170S02	
Business Unit: SNT-BTP	Period Mark	A	View Angle
	View Angle	1:5	
BOM Code	1.13.170.02.2012	Page 1	Total 1 Page
Product Series	BTP-ITO	思诺泰科电子(苏州)有限公司 SINOTRONICS INC.	